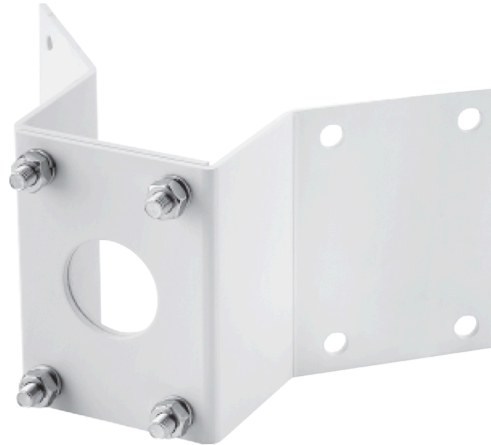


DA-RM1100

Corner Mount



ALUMINUM MOUNT ADAPTER FOR STABLE CAMERA INSTALLATION

The DA-RM1100 is a mount adapter designed for the stable installation of security cameras. Constructed from corrosion-resistant aluminum, it ensures long-term durability and operational reliability. It is compatible with the DA-WM1400 wall mount, enabling flexible system configurations tailored to specific installation environments. With a weight of 1.2kg, it provides secure mounting, while the white finish ensures seamless integration with its surroundings. It supports efficient installation and operation across diverse indoor and outdoor security environments.

DATASHEET

MECHANICAL

Material	Aluminum
Color	White
Dimensions	337.8(L) x 140.0(W) x 199.1(H) (13.29"(L) x 5.52"(W) x 7.83"(H))
Weight	1.2kg (2.65lb)
Relevant Mount	DA-WM1400
Relevant Model	-

DIMENSIONS

Unit - mm (inch)

