

# DOOR COORDINATORS

## SURFACE MOUNT

### DOOR COORDINATOR – SURFACE MOUNTED

DCM, DCFB, DCMB



- UL listed fire door coordinator
- Use on paired doors (with or without astragal) to allow inactive door to close before active door
- Non-handed
- Surface mounted
- Aluminum extrusion with steel components
- Active door holding lever with adjustable tension
- Mounting hardware included: machine screws
- Anodized aluminum finish (28)
- Filler bars – available
- Mounting brackets for other components – available

DCSM	42	28
MODEL	SIZE	FINISH

SIZE	LENGTH	USAGE
32	32 (813)	For openings 34–52" (864–1320mm) or a pair of 24" (610mm) doors
42	42 (1067)	For openings 52–72" (1320–1829mm) or a pair of 30" (762mm) doors
52	52 (1320)	For openings 62–92" (1575–2337mm) or a pair of 36" (914mm) doors
60	60 (1524)	For openings 70–108" (1778–2743mm) or a pair of 42" (1067mm) doors

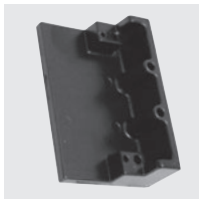
IN (MM)

### MOUNTING BRACKETS



#### DCMB4250

- Allows other components to be installed over door coordinator
- Use with door frames with a door stop height of  $\frac{5}{8}$ " (16mm) and a minimum door stop width of  $2\frac{1}{2}$ " (64mm)
- Sold individually



#### DCMB4750

- Allows other components to be installed over door coordinator
- Use with door frames with a door stop height of  $\frac{5}{8}$ " (16mm) and a door stop width between  $\frac{7}{8}$ – $2\frac{1}{4}$ " (22–57mm)
- Sold individually

### FILLER BARS



#### DCFB

- DCSM coordinators do not always cover entire length of door stop. Filler bars are used maintain a clean aesthetic look.
- Aluminum extrusion, anodized finish (28)

ITEM	DIMENSIONS*
DCFB18-28	18 x $1\frac{5}{8}$ x $\frac{5}{8}$ (457 x 41 x 16)
DCFB32-28	32 x $1\frac{5}{8}$ x $\frac{5}{8}$ (813 x 41 x 16)
DCFB42-28	42 x $1\frac{5}{8}$ x $\frac{5}{8}$ (1067 x 41 x 16)

IN (MM) (\*) LENGTH X WIDTH X HEIGHT